

# HARDWOOD FLOORING

## TECHNICAL DETAILS



Color: Natural

Layout:



Pattern: Chevron

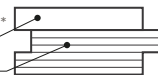
### 1. PRODUCT INFO

Species	American Walnut
Finish	UV Silk
Structure	Engineered (2-layer)
Joint	T&G
Bevel	Micro (0,5 mm)
Surface	Light Brush
Grade	Select
<b>DIMENSIONS</b>	
Thickness	15 mm (5/8")
Width	90 mm (3,54")
Row Length	510 mm (1,67')
Angle	45

### 2. STRUCTURE

2-layer Engineered Construction \*

Solid wood 3 mm \*\*  
Plywood \*\*\*



\* High Balance and Stability  
\*\* Saw Cut American Walnut  
\*\*\* Birch water resistant plywood

### 3. PACKAGING

<b>BOX</b>	<b>PALLET</b>
1,1016 m2 (12 ft2)	70,502 m2 (760 ft2)
Dimensions (TWL): 125 x 280 x 615 mm (5"*11"*2')	Dimensions (LWH): 1260 x 1150x 1100 mm (4,15'*3,8'*3,6')
Weight: 12 kg (26 lb)	Weight: 768 kg (1694 lb)

### 4. FINISH

Sheen \ Gloss	Matte
Look	Semi-open pores, wire brushed
Feeling	Transfer warmth of natural wood
Type	UV cured modified polyurethane-acrylate
Wear resistance	High
Scratch resistance	Medium
Slip resistance	50 (SRV dry)
Resistance to chemical agents	Class 5 (Except blue ink)
Maintanance	Maintenance free
Repairability	Easy

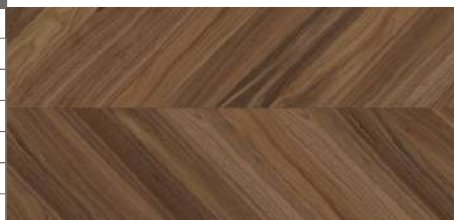
### 5. DESCRIPTION

Name	Select
Color variation	
Knots	
Other	

Product clean look is created by minimalistic natural wood color variation, occasional small knots up to 10mm, as well as rare light sapwood.

### 6. TECHNICAL INFORMATION

Characteristics (EN 14342)		Deviations (EN 13489)	
Formaldehyde emission class	E1; ULEF	Deviation on Thickness	0,2 mm
Pentachlorophenol content	None	Deviation on Width	0,2 mm
Thermal resistance	0,118 m2 K\W	Height Difference	0,2 mm
Thermal conductivity	0,161 W\ (m K)	Cup	<0,2% of width
Fire resistance	Dfl-s1	Bow	<0,5% of length
		Spring	<0,1% of length



## PRODUCT USE

### 7. INSTALLATION



Level



Glue-down

Glue down over concrete, plywood or wooden subfloor or nail down over wooden subfloor.  
Applicable above, on and below ground level.

### 8. STORAGE & USE



Air Humidity  
40-65%



Temperature  
+18°C ... +22°C  
(64°F ... 72°F)

### 9. CARE & MAINTENANCE

Maintenance of hardwood floors with UV Silk assumes normal (daily if necessary) cleaning from dust and grit using a vacuum, followed by a thorough cleaning with floor cleaner. Floor surface areas that receive the most traffic and get worn down quicker, such as areas by the front door, hallways, kitchens etc. should be periodically renewed with oil.

### 10. DESCRIPTIONS & IMAGERY

Flooring colors displayed in digital platforms may vary according to the color settings of the monitor you are using.



ME Decor Group OÜ  
Kopli 27, 10412, Tallinn, Estonia  
VAT EE102590311  
E-mail: info@me-decor.com  
www.me-floor.com  
Inst.: @me\_floor\_

